

## **Notice of Release of Request for Proposal**

### **ENGINEERING SERVICES**

### **FOR**

### **CITY OF BEAVERTON**

### **BEAVERTON TRAIL HEAD PARK**

### **PRIME PROFESSIONAL/CONSTRUCTION MANAGEMENT SERVICES**

The City of Beaverton is seeking bids for prime professional/construction management services related to Beaverton Trail Head Park. The full Request for Proposal (RFP) is available from the Beaverton City Hall located at 128 Saginaw Street, Beaverton, MI 48612. (989-435-3511)

The bid submittal requirements include experience, work plan, schedule, cost, and project staff information. The Successful Respondent shall comply with the limited time frame for completion of these negotiations to ensure that full City of Beaverton approval and services commence no later than January 2025.

#### **SUBMISSIONS**

The Consultant's proposal must be submitted electronically to [ssirpilla@beavertonmi.org](mailto:ssirpilla@beavertonmi.org) no later than December 3, 2024, at 2:00 pm.

**CITY OF BEAVERTON, MICHIGAN  
REQUEST FOR PROPOSALS FOR  
PRIME PROFESSIONAL – DESIGN, ENGINEERING, CONSTRUCTION  
ADMINISTRATION SERVICES**

**THE TRAIL OF TWO CITIES CONNECTOR PATHWAY**

Issue Date: NOVEMBER 12, 2024

Proposals will be accepted until 2:00 pm, December 3, 2024

**Section 1: Instructions**

**1.1 Purpose:** The City of Beaverton is releasing this Request for Proposals (RFP) for a Project Prime Professional open to all interested firms to provide comprehensive project prime professional services throughout preconstruction, construction and post construction phases that includes design, community engagement, permitting (if required), grant reporting and compliance and construction oversight. The Prime Professional shall prepare plans, specifications and bid documents for the project and oversee the project construction. Funding for this project is provided by the Council of Michigan Foundations (CMF) through a partnership with the Michigan Department of Natural Resources (MDNR) Spark Grant Program (American Rescue Plan Act of 2021 – State and Local Fiscal Recovery Funds (SLFRF)) and certain Federal provisions will apply.

**1.2: Selection Process:** Interested firms must respond to the requirements included herein. This technical proposal, as well as an interview (if determined necessary) will be evaluated to determine the lowest qualified bid to provide the project prime professional services for this project. The City of Beaverton reserves the right to reject any and all proposals and may stop the selection process for the project at any time.

**1.3: Selection Criteria:** Submissions will be evaluated on the following criteria:

<b>Criteria</b>	<b>Points</b>
Quality of the Work Plan/Approach	30
Cost Effectiveness	20
Personnel (experience, qualifications, knowledge of project area/community, specific experience with public parks and projects funded by MDNR, state and federal grants)	20
Capability (firm experience, references, ability to complete project tasks on time and budget)	20
Completeness of Response	10
<b>Total Available Points</b>	<b>100</b>

Respondents scoring less than 75 points on all non-cost criteria may be determined unqualified.

**1.4 Instructions for Proposal and Deadline:** Bidders must submit a complete, straightforward response to this RFP. The proposal must be submitted via email to Shannon Sirpilla at [sspirilla@beavertonmi.org](mailto:sspirilla@beavertonmi.org) or mailing your proposal to:

City of Beaverton  
Beaverton Trail Head Park Proposal  
128 Saginaw St.  
PO Box 477  
Beaverton, MI 48612

To be considered responsible and responsive, proposals must be received by 2:00 pm EST. December 3, 2024. Bidder's failure to submit a proposal as required may result in being deemed nonresponsive. The City of Beaverton reserves the right to extend the deadline for submissions of responses.

**Schedule**

Questions due: November 19, 2024 by 5:00 pm.

Responses to questions issued: November 26, 2024

Proposals due: December 3, 2024

Interviews (if necessary): December 9, 2024

Approval: December 16, 2024

**1.5 Contract Award:** Contract award will be undertaken by the City of Beaverton with the firm whose proposal is determined to be the lowest qualified bidder. The interview, if needed, may be conducted in the City of Beaverton or in a virtual format. In the event the City of Beaverton and the successful candidate are unable to agree upon the terms and provisions of a definitive agreement, the City of Beaverton reserves the right to negotiate with another firm or firms.

**1.6 Additional Information:** The City of Beaverton reserves the right to request supplemental or clarifying information from any responding party, without having been deemed to have changed the terms of this RFP.

**1.7 Rejection of Proposals:** The City of Beaverton reserves the right to reject any or all proposals, in whole or in part, received as a result of this RFP.

**1.8 Costs:** The City of Beaverton is not responsible for any cost incurred by bidders prior to acceptance of a proposal and the award and execution of a contract. All costs incurred for the proposal preparation presentation, or contract negotiations are the responsibility of the project prime professional. The City of Beaverton shall not be responsible for, and will not pay, the cost for any information solicited or received.

**1.9 Responsibilities of the Project Prime Professional:** The Prime Professional is responsible for all services of the contract including development of design drawings, and managing bidding processes and overseeing the preconstruction, construction, and postconstruction phases, as well as project reporting, compliance, and community engagement. The Prime Professional services shall include but are not necessarily limited to developing design documents, cost estimating, coordinating design modifications, leading/supporting community engagement to assess community priorities regarding design modifications, assembling contract bidding documents, assist with promoting bid opportunities to veteran, women, and minority owned businesses, assisting with bid opening and ensuring compliance with competitive bid requirements.

Responsibilities also include the supervision of trade construction contractors in the performance of their contracts assuring efficient use of materials to provide quality construction at the lowest responsive, responsible cost in accordance with the architectural/engineering contract documents, drawings and specifications with owner approved modifications. (See tasks in scope of services below in section 2 for more details.) The Prime Professional recognizes the City of Beaverton's fixed budget based on the grant agreement and shall endeavor in a relationship of trust with the City of Beaverton to monitor and make recommendations to accomplish the project within the fixed project budget.

**1.10 Inquiries:** Questions may be sent to Shannon Sirpilla, city Manager at [ssirpilla@beavertonmi.org](mailto:ssirpilla@beavertonmi.org) . All inquiries must be submitted no later than 5:00 pm December 18, 2024. Questions will be responded to via email and posted to the city's website.

**1.11 Public Information.** All information submitted in response to this RFP shall become the property of the City of Beaverton, and as such, may be subject to public review as public records.

## Section 2: Project Details

**2.1 Project Description:** The City of Beaverton received Spark grant funding administered by the Council of Michigan Foundations through a partnership with the Michigan Department of Natural Resources to enhance recreation opportunities on the Trail of Two Cities Connector Pathway.

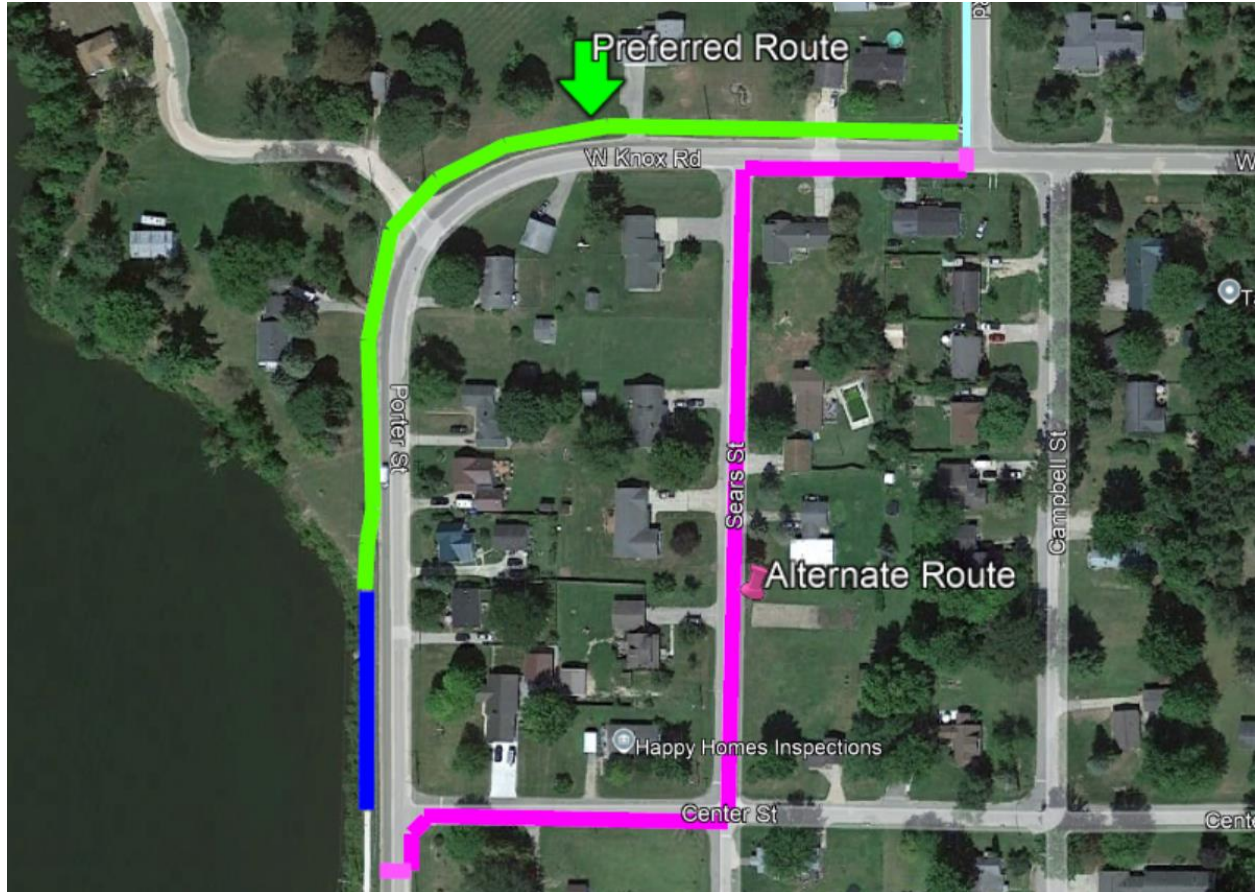
The City of Beaverton is asking for proposals on all three options separately, with Option A being the option of preference. The City will choose which option fits best into the grant budget. When proposing please give a bid for each option separately.

**Option A** – A separate pathway (sidewalk) along, and just outside the Knox/Porter right of way, this includes 250' of 8' wide boardwalk that connection to existing sidewalk on Porter near the boat launch. Creating a separate path from the road. This option will likely require easements from the property owners, and a proper topographic survey will determine where that will be needed as part of the design. Note: this option was also the one most desired by the community.

**Option B** – A 4' wide paved shoulder along Knox/Porter right of way, this includes 250' of 8' wide boardwalk and connection to existing sidewalk on Porter near the boat launch. This would simply be an extension of the current 4' wide shoulder running along Croll from Gladwin. It may require an easement from one property owner on Porter at the Lake. Although this would be an extension of what was installed along Croll it's not an ideal solution to allow non-motorized users in the area adjacent to the roadway.

**Option C** – Crossing Knox at Croll and connecting to Sears or Cambel with a 4' wide shoulder, placing share the road markings and signage to Porter, where a second crossing would connect to the existing sidewalk. This includes 250' of 8' wide boardwalk

but dead ends to the north. Also, the two street crossings are not ideal.



The approved scope of work, and City of Beaverton's subrecipient agreement with the Council of Michigan Foundations is attached.

**2.2 Project Budget:** The dollar amount of this proposal is intended to cover the cost of project preconstruction, construction, and postconstruction phases, as well as project reporting, compliance and community engagement.

**2.3 Anticipated Schedule:** Construction may start at any time after construction documents have been completed and approved by the City of Beaverton and Council of Michigan Foundations. Funds are to be obligated by December 31, 2025, and fully expended by September 30, 2026. To meet the encumbrance deadline of December 31, 2025, the funds will need to be part of an executed contract and may be part of a contingency allowance amount. These deadlines are non-negotiable and may not be extended because of federal requirements.

#### **2.4 SCOPE OF SERVICES**

The services provided by the Prime Professional will include:

- 1.** Project initiation meeting

2. Site Topographic Survey
3. Design including community engagement
4. Construction Documents
5. Permits
6. Bid Process and Selection of Construction Contractor
7. Construction Management and Site Inspection
8. Federal Funds Compliance
9. Grant Reports and Administration
10. Obtain Right-of-Way permits when necessary
11. Obtain EGLE permits

### **Scope of Services Description:**

#### **Task 1: Project Initiation Meeting**

The City of Beaverton, Prime Professional, and any partners responsible for managing the project, shall hold an initial meeting to review and agree upon the project scope and schedule, project requirements, roles and responsibilities, the selection process for procuring contractors, ARPA compliance requirements, ADA requirements, the number of public meetings and techniques for public involvement proposed for the project, and any other information which would assist in project completion. The Prime Professional shall prepare and distribute to all project partners a brief meeting summary clearly indicating the agreements reached at the meeting.

#### **Task 2: Site Topographic Survey**

Prepare a full topographic survey of the entire part of the park to be improved and develop the applicable project boundary map and legal description for submission to the Michigan Department of Natural Resources. The Prime Professional shall conduct site-specific evaluations in preparation for design. Work may include, at a minimum, identification and mapping of the following:

- Site survey showing extent of project boundary
- Ownership/grant/lease status of all lands to be incorporated into the design
- Manmade structures, buildings, or facilities on or adjacent to the site
- Above and below ground infrastructure, including stormwater treatment structures
- Transportation/circulation systems (truck, car, bus, pedestrian, bicycle, etc.) that serve or are located near the site
- Adjacent land and water use
- Historic and archeological resources
- Soil Borings and geotechnical evaluation. This is expected to consist of four (4) borings to a depth of 10 feet at logical intervals within the Phase 1 area as agreed upon with the City of Beaverton.
- Topography and hydrology
- Natural resources, including mature trees, wetlands delineation and identification of endangered species.
- View corridors
- Zoning and other applicable designations
- Analysis of site constraints, needs and opportunities



### **Task 3: Design**

The Prime Professional shall prepare draft and final designs based on the Spark Grant application and modifications based on the reduction of funding from the Council of Michigan Foundations. Provide as-needed value engineering and construction advice regarding materials, methods, systems, and other conditions as they affect the project constructability and cost. The designs shall be provided to the City of Beaverton (and the CMF for review and competition). It is anticipated that design review meetings with the City of Beaverton will be held at the 30%, 60% and 90% stages. Prepare estimates at 60% and 90% of each phase so the scope of work and project costs can be aligned by the completion of each phase. Drawings should include the scale of the drawings prepared, and the seal of the professional who is overseeing the design. Provide recommended improvements needed for compliance with the Americans with Disabilities Act. Work with the City of Beaverton to identify acceptable bid alternatives and provide budget estimates for the alternates for the City of Beaverton review. Support or lead community engagement activities regarding project design decisions.

### **Task 4: Construction Documents**

The Prime Professional shall prepare the final construction drawings, plans, specifications, and cost estimates. The final construction documents shall be provided to the City of Beaverton and the CMF if requested for review and concurrence. Final construction documents must be certified by a licensed professional engineer, architect or landscape architect and the appropriate seal must be affixed to these documents.

Within 180 days of execution of a contract, and before soliciting bids or quotes or incurring costs other than costs associated with the development of plans, specifications, or bid documents, the City of Beaverton must be provided with plans, specifications, and bid documents for the project facilities, sealed by the Prime Professional.

### **Task 5: Permits**

Provide as needed services in applying for, tracking, securing, and serve as a permit holder whenever possible for all required project permits. Pay all required permit and inspection fees necessary (reimbursable) for a fully permitted project. Communication and coordination with relevant utility companies to the extent needed to execute the project. The Prime Professional shall prepare the necessary permit or other approval applications and obtain the required permits or approvals.

Such permits include but are not limited to permits to fill or otherwise occupy a floodplain, and permits required under Parts 301 and 303 of the Natural Resources and Environmental Protection Act, Act 451 of the Public Acts of 1994, as amended. It is the sole responsibility of the consultant to determine what permits are required for the project, secure the permits needed, and remain in compliance with such permits.

Copies of all required permits and approvals shall be submitted to the City of Beaverton upon receipt.

### **Task 6: Bid Process and Selection of Construction Contractor**

After the final design and construction documents have been approved by the City of Beaverton and the Prime Professional shall assist with preparing and distributing bid documents to select a construction contractor. The bid invitation shall require the respondents to demonstrate their ability to satisfy any applicable Federal requirements. The Prime Professional will distribute and issue construction documents to bidders and receive bids following any requirements outlined in the subrecipient agreement with the Council of Michigan Foundations. These include requirements regarding distribution of bid announcements to veteran, women, and minority owned businesses and details cost thresholds for competitive bid requirements.

The consultant will be responsible for administering the bid process including bid advertisement, pre-bid meeting, answering contractors questions and requests for information, issuing addendum [JB1][JB2] as necessary, attending the bid opening, tabulating the bids, qualifying contractors as required to ensure financial solvency and labor availability, providing a recommendation for award of the construction contract, and attending City of Beaverton meetings to present the bids and recommendation.

Upon award of the contract the consultant shall prepare a draft contract or contract(s) to conduct the work with the selected construction contractor(s). The contract(s) shall contain a detailed work plan with adequate opportunity for review at appropriate stages of project completion, a payment schedule, the project cost, Federal requirements, dispute resolution and insurance requirements.

### **Task 7: Construction Management and Site Inspection**

After receiving receipt of all necessary permits, and upon approval from the City of Beaverton (and CMF if required), the construction contractor(s) may begin site preparation and construction work according to the final design and construction documents. The consultant shall submit monthly payment applications to the City of Beaverton. The Project Prime Professional will be responsible for reviewing and validation of sub-contractor payment requests. After 90% of the work is completed, the consultant will include a punch list of any incomplete items and an estimated schedule for project completion.

The consultant shall perform office technician, contract administration, construction inspection, and material testing services for the duration of the project construction.

This task includes, as a minimum, the following items:

- Schedule, attend and lead a preconstruction meeting
- Preconstruction documentation including pictures and videos of the work areas
- Perform material and density testing
- Complete inspector reports including field calculations
- Field Engineering support



- Provide coordination of all construction trades/activities with any, and all “owner” provided Fixtures, Furniture and Equipment
- Track progress, generate pay estimates and contract modifications, and coordinate scheduling with the contractor
- Coordinate and monitor the implementation of change orders.
- Lead construction progress meetings including distribution of meeting minutes within 2 business days (Update the City of Beaverton immediately of any activities which may affect operations/schedule.
- Communicate with residents, utility companies, property owners and City of Beaverton representatives, related to the project
- Collect, assemble, and provide to City of Beaverton as-built drawings and records, operating and maintenance manuals, warranties, guarantees, and project directories

Following satisfaction with punch list items, the consultant shall submit a statement that the work has been completed in accordance with the contract/ subcontract(s), the final design and construction specifications, and all permit requirements. The completion statement must be prepared and/or certified by a licensed professional engineer, architect or landscape architect. Unless otherwise specified during the project initiation meeting, the consultant shall submit one set of record drawings, certified by a licensed professional engineer, architect or landscape architect. When the consultant is satisfied work is complete, it shall submit a final project report to the City of Beaverton and the CMF, including a copy of the completion statement and a copy of the certified record drawings and photo - documentation in the form of digital images of the site prior to, during and upon completion of work.

Post construction, the Prime Professional will conduct training sessions for appropriate employees regarding all operation and maintenance of any technical equipment. Document appropriate use in writing or through video recording as appropriate. Prepare and deliver one paper and one electronic copy of all close out materials, O&M manuals, etc. Provide one paper and one electronic as-built markup set of documents and final corrected Record Documents delivered to the City of Beaverton in CAD and/or PDF formats. Provide follow-up at eleven months after Substantial Completion in order to identify and correct any warranty items prior to the one-year Labor and Materials Warranty expiring.

### **Task 8: Federal Funds Compliance**

This project is receiving funding from the American Rescue Plan Act of 2021 – State and Local Fiscal Recovery Funds (SLFRF). The SLFRF awards are generally subject to the requirements set forth in the Uniform Administrative Requirements, Cost Principles, and Audit Requirements for Federal Awards, 2 CFR Part 200 (Uniform Guidance). In all instances, recipients shall review the Uniform Guidance requirements applicable to recipient’s use of SLFRF funds, and SLFRF-funded projects.

Funds must be obligated by City of Beaverton into third party contracts by December 31, 2025, and expended by September 30, 2026.

The project must:

Complete construction to all applicable local, state and federal codes, as amended; including but not limited to the federal Americans with Disabilities Act (ADA) of 2010, as amended; the Persons with Disabilities Civil Rights Act, Act 220 of 1976, as amended; the Playground Equipment Safety Act, P.A. 16 of 1997, as amended; the Utilization of Public Facilities by Physically Limited Act, P.A. 1 of 1966, as amended; the Elliott-Larsen Civil Rights Act, Act 453 of 1976, as amended; and the 2013 Access Board's Final Guidelines for Outdoor Developed Areas.

Comply with legal requirements relating to nondiscrimination and nondiscriminatory use of Federal funds. Those requirements include ensuring that entities receiving Federal financial assistance from the Treasury do not deny benefits or services, or otherwise discriminate on the basis of race, color, national origin (including limited English proficiency), disability, age, or sex (including sexual orientation and gender identity), in accordance with the following authorities: Title VI of the Civil Rights Act of 1964 (Title VI) Public Law 88-352, 42 U.S.C. 2000d-1 et seq., and the Department's implementing regulations, 31 CFR part 22; Section 504 of the Rehabilitation Act of 1973 (Section 504), Public Law 93-112, as amended by Public Law 93-516, 29 U.S.C. 794; Title IX of the Education Amendments of 1972 (Title IX), 20 U.S.C. 1681 et seq., and the Department's implementing regulations, 31 CFR part 28; Age Discrimination Act of 1975, Public Law 94-135, 42 U.S.C. 6101 et seq., and the Department implementing regulations at 31 CFR part 23. In order to carry out its enforcement responsibilities under Title VI of the Civil Rights Act, Treasury will collect and review information from recipients to ascertain their compliance with the applicable requirements before and after providing financial assistance. Treasury's implementing regulations, 31 CFR part 22, and the Department of Justice (DOJ) regulations, Coordination of Non-discrimination in Federally Assisted Programs, 28 CFR part 42, provide for the collection of data and information from recipients (see 28 CFR 42.406). Treasury may request that recipients submit data for post-award compliance reviews, including information such as a narrative describing their Title VI compliance status.

Comply with the Davis-Bacon Act, as amended (40 U.S.C. 3141-3148). When required by Federal program legislation, all prime construction contracts in excess of \$2,000 awarded by non-Federal entities must include a provision for compliance with the Davis-Bacon Act (40 U.S.C. 3141-3144 and 3146-3148 supplemented by Department of Labor regulations (29 CFR Part 5, "Labor Standards Provisions Applicable to Contracts Covering Federally Financed and Assisted Construction"). In accordance with the statute, contractors must be required to pay wages to laborers and mechanics at a rate not less than the prevailing wages specified in a wage determination made by the Secretary of Labor. In addition, contractors must be required to pay wages not less than once a week. The non-Federal entity must place a copy of the current prevailing wage determination issued by the Department of Labor in each solicitation. The decision to award a contract or subcontract must be conditioned upon the acceptance of the wage

determination. The non-Federal entity must report all suspected or reported violations to the Federal awarding agency. The contracts must also include a provision for compliance with the Copeland “Anti-Kickback” Act (40 U.S.C. 3145), as supplemented by Department of Labor regulations (29 CFR Part 3, “Contractors and Subcontractors on Public Building or Public Work Financed in Whole or in Part by Loans or Grants from the United States”). The Act provides that each contractor or subrecipient must be prohibited from inducing, by any means, any person employed in the construction, completion, or repair of public work, to give up any part of the compensation to which he or she is otherwise entitled. The non-Federal entity must report all suspected or reported violations to the Federal awarding agency.

Comply with Contract Work Hours and Safety Standards Act (40 U.S.C. 3701-3708). Where applicable, all contracts awarded by the non-Federal entity in excess of \$100,000 that involve the employment of mechanics or laborers must include a provision for compliance with 40 U.S.C. 3702 and 3704, as supplemented by Department of Labor regulations (29 CFR Part 5). Under 40 U.S.C. 3702 of the Act, each contractor must be required to compute the wages of every mechanic and laborer on the basis of a standard work week of 40 hours. Work in excess of the standard work week is permissible provided that the worker is compensated at a rate of not less than one and a half times the basic rate of pay for all hours worked in excess of 40 hours in the work week. The requirements of 40 U.S.C. 3704 are applicable to construction work and provide that no laborer or mechanic must be required to work in surroundings or under working conditions which are unsanitary, hazardous, or dangerous. These requirements do not apply to the purchases of supplies or materials or articles ordinarily available on the open market, or contracts for transportation or transmission of intelligence.

#### **Task 9: Grant Reports and Administration**

The Prime Professional shall assist the City of Beaverton with grant administration requirements as needed. The Prime Professional will comply with the attached terms and conditions of the City of Beaverton’s Subrecipient Grant Agreement with the Council of Michigan Foundations. This agreement includes multiple requirements regarding state and federal compliance. Communicate and coordinate with the City of Beaverton, the Council of Michigan Foundations, and other stakeholders to meet the requirements of the subrecipient grant agreement. The Prime Professional will develop or support the development of the City of Beaverton’s financial and narrative progress reports and reimbursement requests and other reporting requirements to the Council of Michigan Foundations.

#### **Task 10: Environmental Review Determination**

Before the City of Beaverton will approve plans, specifications, or bid documents; or give approval to the Prime Professional to advertise, seek quotes, or incur construction costs for this project, the consultant will provide documentation to the City of Beaverton that indicates either:

- It is reasonable for the City of Beaverton to conclude, based on the advice of an

environmental consultant, as appropriate, that no portion of the project area is a facility as defined in Part 201 of the Michigan Natural Resources and Environmental Protection Act, Act 451 of the Public Acts of 1994, as amended; or

- If any portion of the project area is a facility, documentation that Department of Environment, Great Lakes and Energy approved response actions have been or will be taken to make the site safe for its intended use within the project period prior to public use of the property, and that implementation and long-term maintenance of response actions will not hinder public outdoor recreation use and/or the resource protection values of the project area.

### **Section 3: SUBMISSION REQUIREMENTS**

It is assumed that any proposal submitted will include, but may not be limited to, the performance of all the activities listed below, and in compliance with the City of Beaverton's subrecipient agreement with the Council of Michigan Foundations. If a bidder objects to any aspect of this RFP, they must separately identify the objection, the basis for the objection, and a reasonable alternative in a separate written document attached to the RFP response and identified as "Exceptions to the RFP." Failure of any proposal to identify exceptions as required herein shall be an express and binding acknowledgment that all requirements of the RFP will be satisfied and have been included within the proposal. The Project Prime Professional will include but are not necessarily limited to the services identified below, and any other services described in the City of Beaverton's subrecipient agreement with the Council of Michigan Foundations. Proposals must provide the requested information and be submitted in the format outlined below. Paginate proposals and ensure that the proposals refer specifically to the project at hand.

Submitted proposals should be emailed to Shannon Sirpilla at [sspirilla@beavertonmi.org](mailto:sspirilla@beavertonmi.org) or mailing your proposal to:

City of Beaverton  
Beaverton Trail Head Park Proposal  
128 Saginaw St.  
PO Box 477  
Beaverton, MI 48612

Interested parties should submit a proposal to include the following elements:

**Business Organization:** State the full name, address, and federal I.D. number of the organization and if applicable, the branch office, consultants or other subordinate elements that will provide or assist in providing the service. Indicate whether you operate as an individual, partnership, or corporation. If a corporation, include the state in which you are incorporated. State whether you are licensed to operate and practice in the State of Michigan. General company brochure (if any) or business information material including a description of services that the firm renders for its clients.

**Project Statement:** State in succinct terms your understanding of the project presented by this RFP.

**Project Approach, Management Summary, Work Plan:** Describe in narrative form your unique project approach for this project. Bidders should also outline their work plan and methodology to ensure the success of this project. Describe what services and deliverables will be provided, the quality of services and deliverables and unique aspects of your services which will add value to the project.

**Schedule Plan:** Describe your project execution plan to best benefit the project, budget, and schedule. Provide, at minimum, a summary level critical path schedule based upon your understanding of the project and the preliminary concept provided. Describe the process and procedures you will use to monitor and control the schedule during design and construction. Identify any challenges or opportunities related to City of Beaverton's target schedule for obligation of funds (Dec 31, 2025) and construction completion (September 30, 2026).

**Cost Estimating and Control:** Provide a preliminary cost estimate or cost model for the project as you deem appropriate per your understanding of the project and the preliminary concept provided. Provide your analysis of the proposed project budget project; identify any key items/conditions/areas of challenge and describe your initial suggestions and recommendation to mitigate each; describe potential value engineering opportunities and your process for evaluating the initial suggestions and developing additional opportunities with the City of Beaverton throughout the remaining design/construction process.

**Recent experience with related projects:** Provide up to a half page description (for each project) of no more than five recent projects designed and constructed within the last five years. Include the location, owner's name, owner's contact information, engineering fee and construction contract cost. Demonstrate experience in the design and construction of projects similar in nature. This should include general background and experience of your firm, particularly as this relates to municipal grant-in-aid experience

**Project Team/Personnel:** The bidder must be able to staff a project team that has the qualifications and expertise necessary to undertake the project. Identify the number of full-time project managers, engineers, and support personnel within your company, and the number of each to be assigned to this Project. Include the full names of all personnel by classification that will be employed in the project. Indicate which of these project, identify them by name and position/classification, and provide their resumes. Each resume should include, at minimum: a) title and project assignment or role that person will be expected to fulfill for this project; b) educational background and professional registrations; c) a synopsis of experience, training or other qualities that reflect the individual's potential contribution to the project, with specific emphasis or highlight to relevant and similar project experience/success. Limit resumes to not more

than two pages. Provide an organization chart outlining authority and communication lines for each Key Personnel.

**Cost Proposal: Please submit the following bid format for each of the options separately. Name each bid Option A, Option B and Option C.**

For purposes of this cost proposal, assume that the budget for the Prime Professional Contract amount is \$183,000 (the total project budget is \$769,500<sup>[JB3]</sup> which is inclusive of all Project Prime Professional fees, general conditions, overhead and profit. Project Prime Professional costs will be subject to negotiation and mutual agreement should the final approved scope or budget change substantially. It is the intent of this cost proposal to obtain proposals that are priced utilizing the same criteria so an accurate evaluation can be performed. Please assume the anticipated schedule provided will be the schedule required to complete the project, do not make alternate schedule assumptions in the preparation of your proposal, accuracy will be as important as cost in the evaluation of your proposal. Any adjustments to the total project costs varying provided in this RFP through no fault of the Project Prime Professional will be adjusted utilizing the information and rates provided in this cost proposal as mutually agreed upon in writing.

Preconstruction Services total	\$ _____
Bidding Phase Services total	\$ _____
Construction Services total	\$ _____
Post Construction Services total	\$ _____
Other (specify _____) total	\$ _____
Project Reporting, Compliance and Community Engagement total	\$ _____

**Expected Total Not-to-Exceed Contract Amount** **\$ 183,000**

**Schedule of Rates:** Please provide your firm's schedule of rates.

**Statement of compliance:** Describe your understanding of the terms and conditions of this RFP as well as the Subrecipient Grant Agreement with the Council of Michigan Foundations. Discuss your experience with similar grants and compliance requirements.

**Proposal Certification Signature:** Proposals must be signed by an official authorized to bind the company to its provisions. (Please use certification page provided below.)

Non-responsive proposals may not be accepted for review and consideration as the discretion of the City.





**Proposal Certification**

This proposal has been prepared to provide the City of Beaverton with all the information requested in the RFP for Project Prime Professional Services. The undersigned certifies that the proposal contained herein meets or exceeds the scope of services as outlined in the RFP, and associated addenda. The proposal acknowledges the anticipated budget and anticipated schedule for the Project, which is acceptable to the bidder except unless otherwise noted in the Proposal.

The projected total cost for our firm to provide the services outlined within the RFP are:

Signed this \_\_\_\_\_ day of \_\_\_\_\_, 2024.

Name of Firm

\_\_\_\_\_

Address:

\_\_\_\_\_

\_\_\_\_\_

Phone Number: \_\_\_\_\_ Email:

\_\_\_\_\_

If a corporation, indicate state of incorporation and affix seal.

Attest: By:

\_\_\_\_\_

Printed Name and Title

\_\_\_\_\_

Signature/Date

## **Attachments**

Subrecipient Grant Agreement with the Council of Michigan Foundations

Preliminary Project Concept