

City of Beaverton Improvement Projects Update Ross Lake, Tonkin Street, and Brown Street

Community Event #1

May 28, 2025

> Meet the Team



Lucy Zeestraten
Gladwin County Deputy
Drain Commissioner



Matt Lang
City of Beaverton, DDA



Mike Rybicki
Tonkin/Brown Street
Engineering Lead



Tonya Lewandowski
Project Manager &
Ross Lake Engineering Lead



Shannon Sirpilla
City of Beaverton,
City Manager



Paul Hausler
Ross Lake Weed
Control Lead



Joe Rybicki
Tonkin/Brown Street
Engineering Support



Maria Kuenzer
Ross Lake Restoration
Engineering Support



> Project Details

> Project Overview

Ross Lake and Tonkin/Brown Street Improvements



> Ross Lake

Project Details

- Dredging of excess sediment
- Aquatic weed control



> Tonkin Street and Brown Street

Project Details

- Tonkin Street
 - Existing Tonkin Street
 - Tonkin Street Extension
- Brown Street



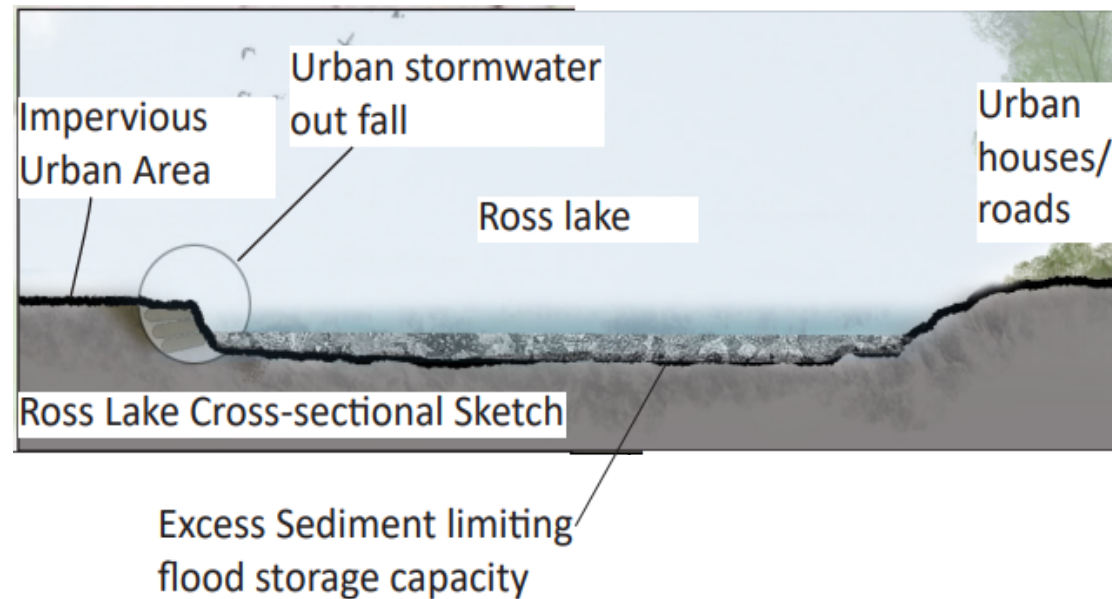


> Project Goals

> Ross Lake

Project Goals

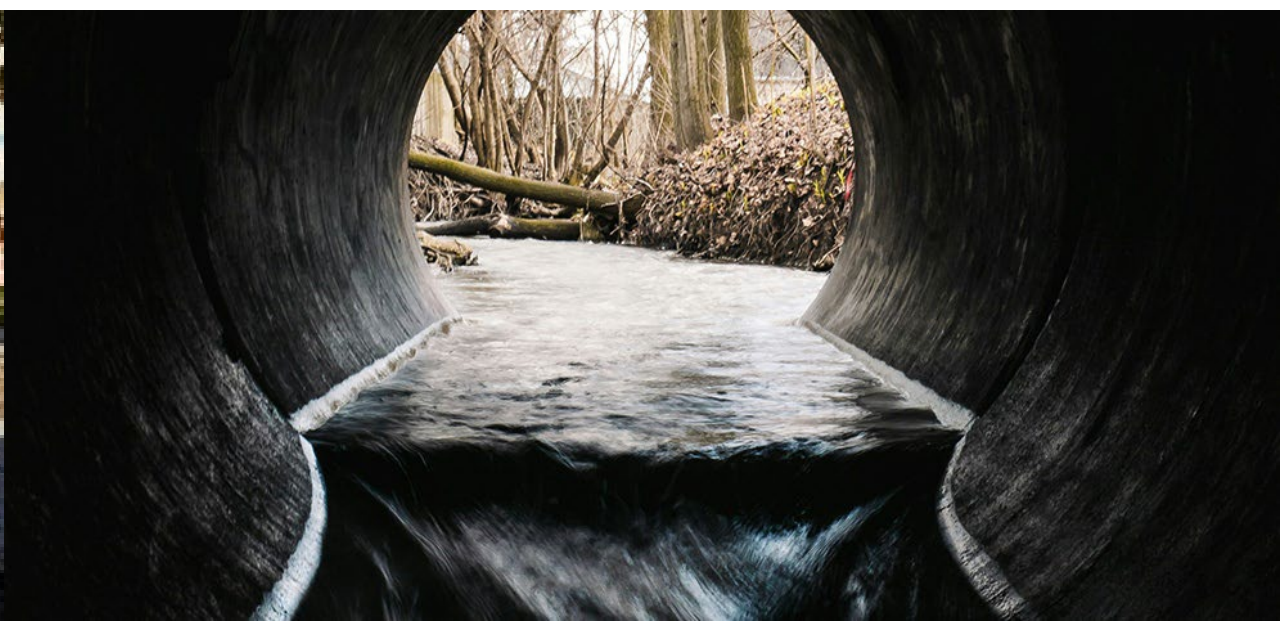
- Remove excess sediment to restore lake storage capacity and reduce flood risk
- Improve water quality by addressing nutrient-rich runoff
- Restore aquatic habitat and enhance recreational use



> Tonkin Street and Brown Street

Project Goals

- Replace outdated, undersized, and broken city infrastructure
- Improve city storm water management for future flood events to reduce impacts to property owners





> Project Status

> Ross Lake

Project Status

- Grant Approved
- Environmental Review in Process
- Initiating Field Data Collection



> Tonkin Street and Brown Street

Project Status

- Grant Approved
- Environmental Review in Process
- Initiating Field Data Collection



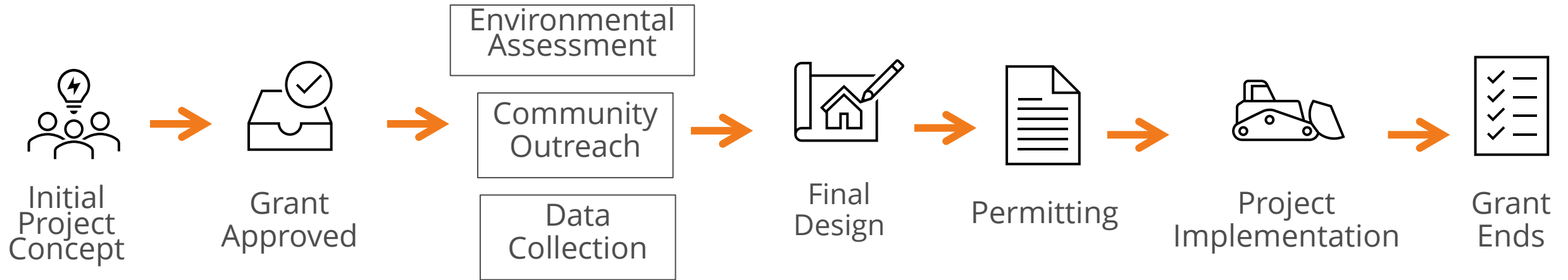


> Project Schedule

> Ross Lake



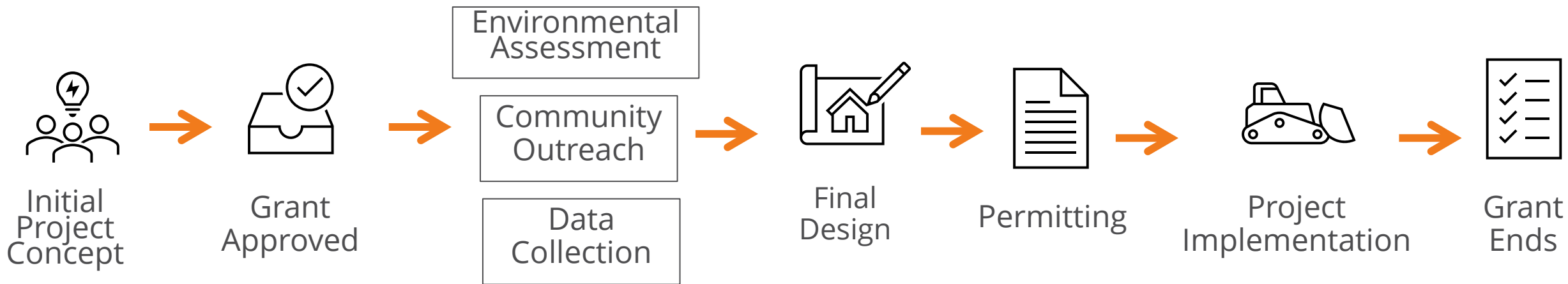
Project Schedule



> Tonkin Street & Brown Street



Project Schedule



A photograph of three people sitting around a table in a modern office setting, engaged in a meeting. A woman with a ponytail is on the left, a man is in the center with his back to the camera, and a woman with dreadlocks is on the right. They are looking at documents on the table. Large windows in the background let in bright light. A semi-transparent grey bar is overlaid across the middle of the image.

Q & A